

# FMH STAINLESS METAL HEAVEN

Referensblad - Elevator Consultants

Juni 2017



Rimex Metals Group has been producing surface finishes on stainless steel and other metals since 1959. With our manufacturing facilities and HQ located in Enfield, we are able to supply Rimex's extensive range of patterned stainless steel finishes that are long established in enhancing the lifespan and aesthetics of lift interiors, doors and architraves

Our experience in servicing the UK and international lift sector means we understand your requirements; that the quality and design of the lift car needs to match those of the building, the consideration of diverse passenger types and its context of use. Also, lift car interiors need to be bright and utilise materials that are durable, easy to clean and safe.



Rimex has an extensive range of patterned, coloured, polished and bead blasted finishes suitable for use on lift cabins, doors and architraves. All of which are certified to ISO 9001 and 14001 standards and manufactured in the UK ensuring quick delivery times for your specifications whether for new build or refurbishment projects.

# FMH STAINLESS

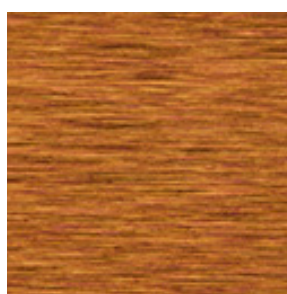
Rimex's products are available in 304, 316, and certain 200 and 400 series grade stainless steels. Product examples are shown below



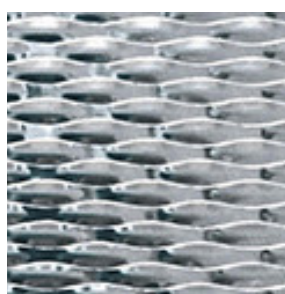
Linen



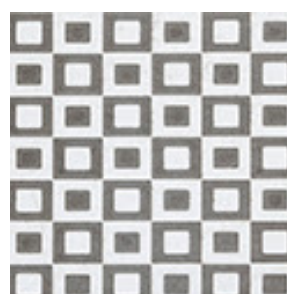
ColourTex Champagne Satin



ColourTex Rosy Gold Satin



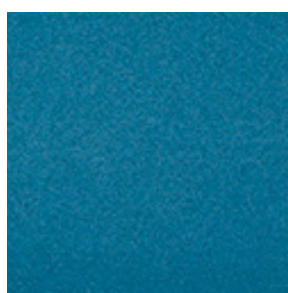
5WL



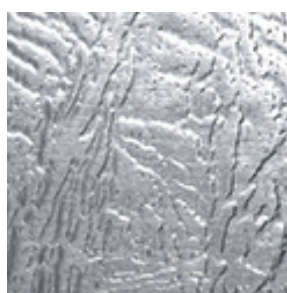
MetalArt Cubix



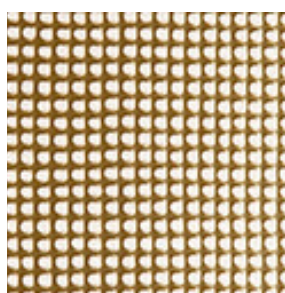
MetalArt Neurona



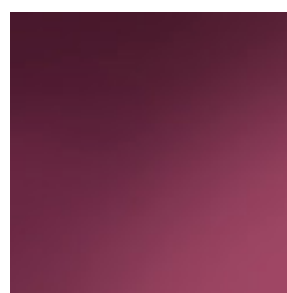
ColourTex Blue Granex



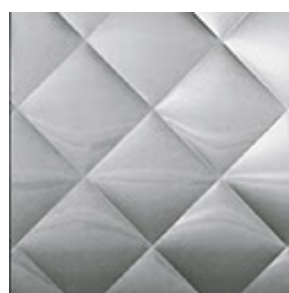
9EH



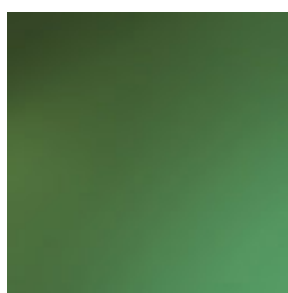
ColourTex Bronze Canvas



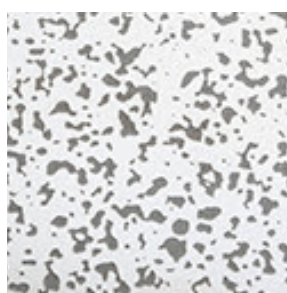
T22 Magenta



Quilted



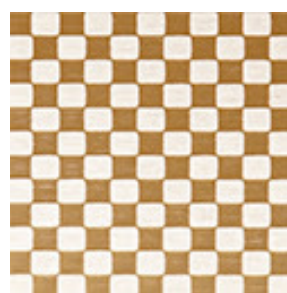
T22 Emerald Green



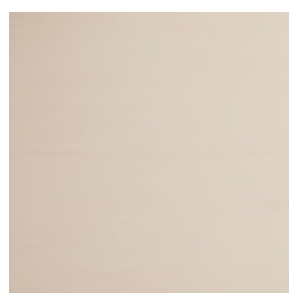
MetalArt Speckle



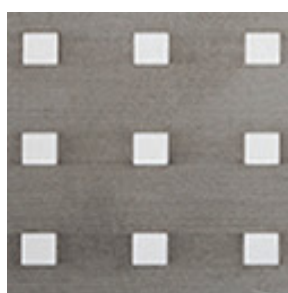
7GM



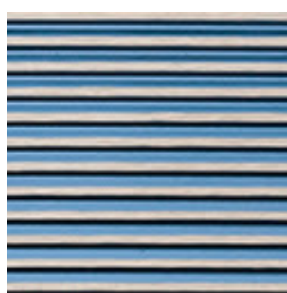
ColourTex Gold Checks



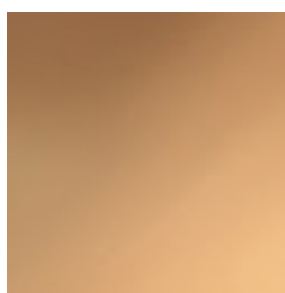
ColourTex Champagne Mirror



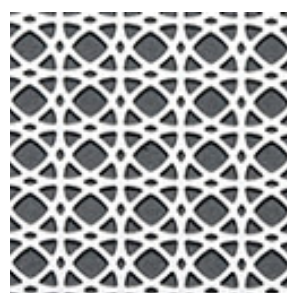
MetalArt Quadro



ColourTex Blue Cambridge



T22 Prestige Rosy Gold



MetalArt Celtic

# FMH STAINLESS

Kontakta oss för mer information

**FMH Stainless - FMH Metal Studio**

**Adress:** Britta Sahlgrens Gata 1  
SE 421 31 Västra Frölunda - Gothenburg

**Tel:** +46(0)31-748 22 77

**E-mail:** [info@fmhstainless.se](mailto:info@fmhstainless.se)

**Hemsida:** [www.fmhstainless.se](http://www.fmhstainless.se)